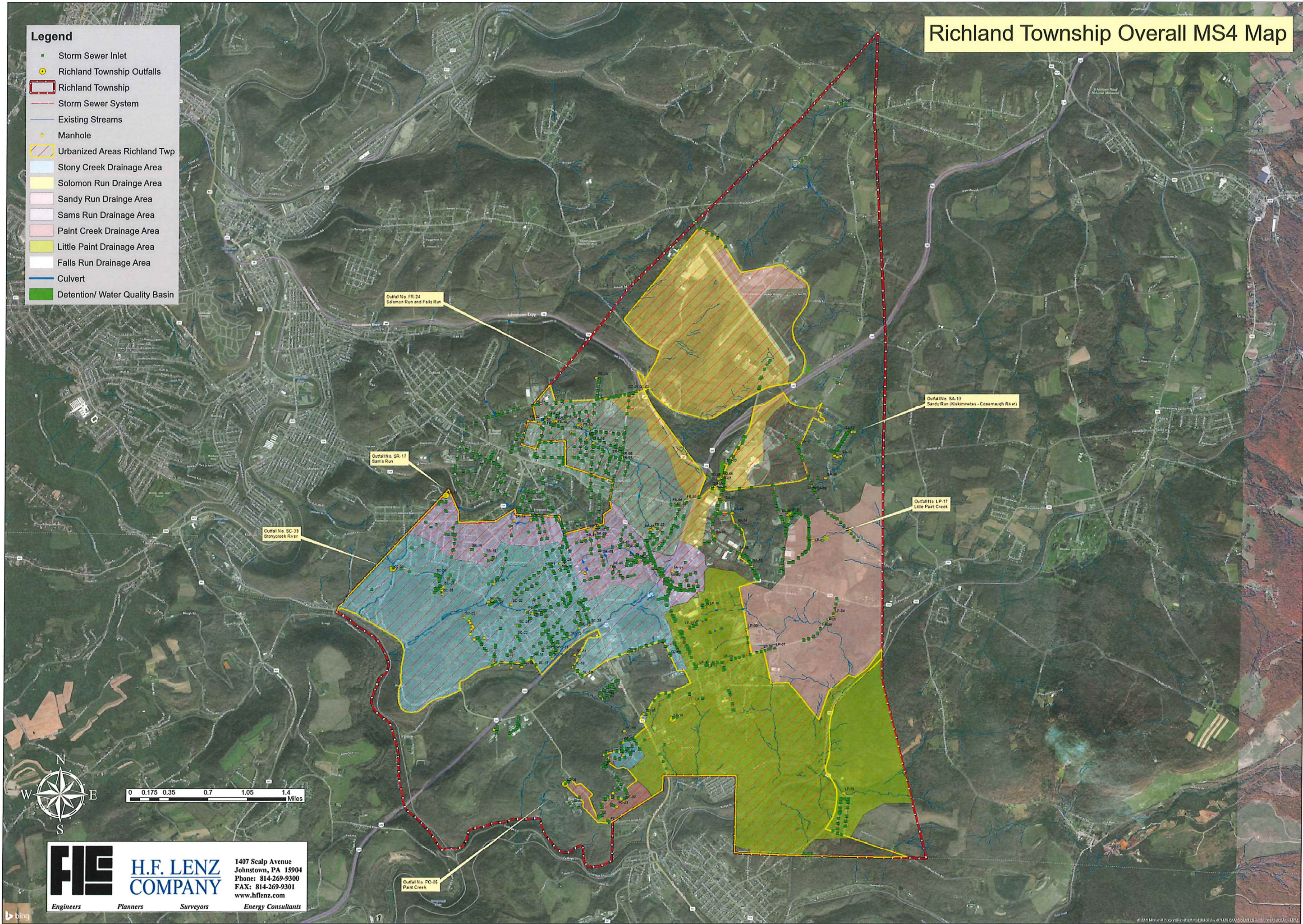


Richland Township Overall MS4 Map

Legend

- Storm Sewer Inlet
- Richland Township Outfalls
- ▭ Richland Township
- Storm Sewer System
- Existing Streams
- Manhole
- ▨ Urbanized Areas Richland Twp
- ▨ Stony Creek Drainage Area
- ▨ Solomon Run Drainage Area
- ▨ Sandy Run Drainage Area
- ▨ Sams Run Drainage Area
- ▨ Paint Creek Drainage Area
- ▨ Little Paint Drainage Area
- ▨ Falls Run Drainage Area
- Culvert
- Detention/ Water Quality Basin



H.F. LENZ COMPANY
 1407 Scalp Avenue
 Johnstown, PA 15904
 Phone: 814-269-9300
 FAX: 814-269-9301
 www.hflenz.com

FIE Engineers Planners Surveyors Energy Consultants