

RELEASE RATES

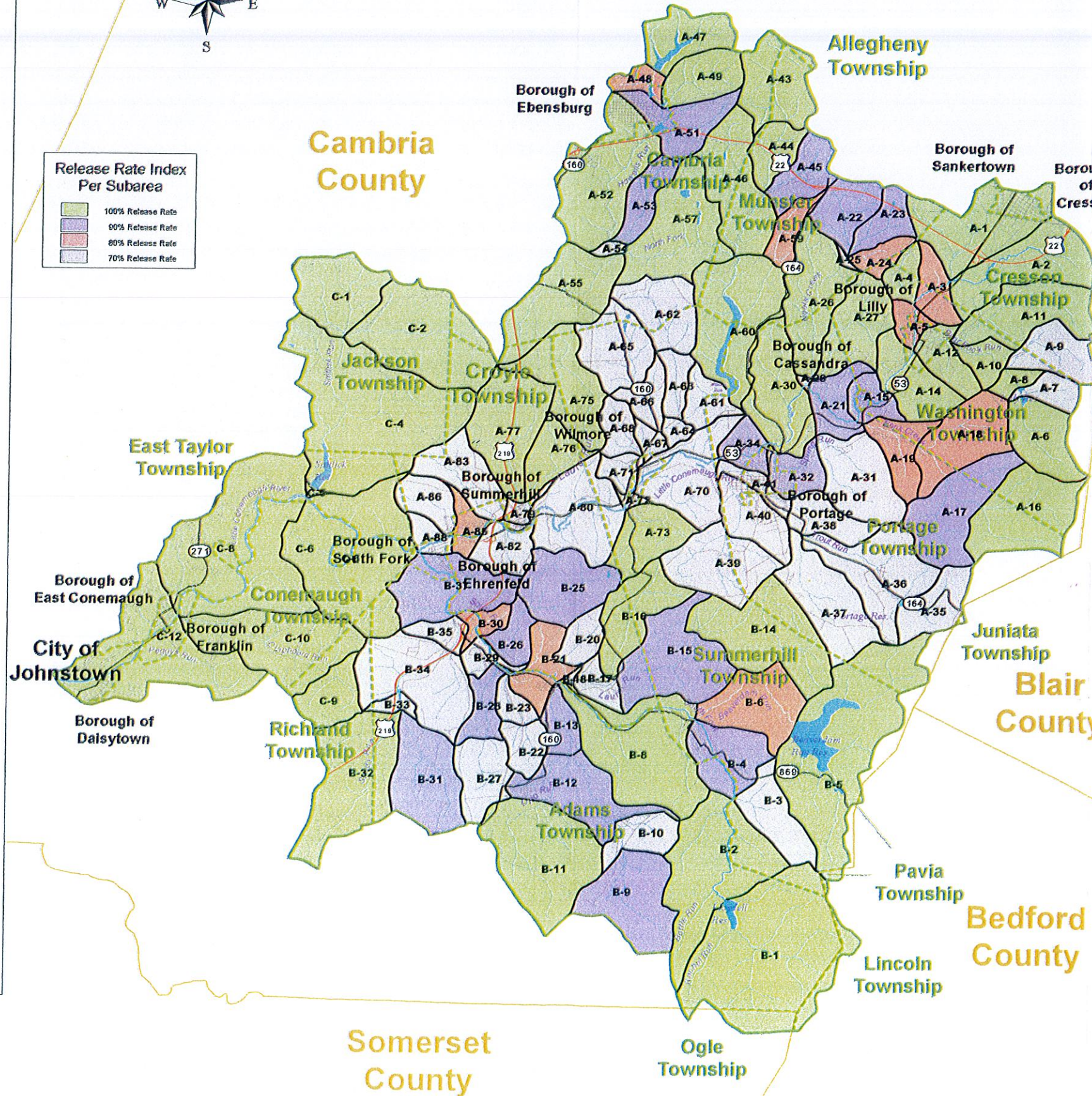
SUBAREA	RELEASE RATE	SUBAREA	RELEASE RATE
A-1	100	A-70	70
A-2	100	A-71	70
A-3	80	A-72	70
A-4	100	A-73	100
A-5	80	A-74	*
A-6	100	A-75	100
A-7	70	A-76	100
A-8	100	A-77	100
A-9	70	A-78	*
A-10	100	A-79	70
A-11	100	A-80	70
A-12	100	A-81	*
A-13	*	A-82	70
A-14	100	A-83	70
A-15	90	A-84	*
A-16	100	A-85	80
A-17	90	A-86	70
A-18	80	A-87	*
A-19	80	A-88	70
A-20	*	B-1	100
A-21	90	B-2	100
A-22	90	B-3	70
A-23	90	B-4	90
A-24	80	B-5	100
A-25	70	B-6	80
A-26	100	B-7	*
A-27	100	B-8	100
A-28	*	B-9	90
A-29	70	B-10	70
A-30	100	B-11	100
A-31	70	B-12	90
A-32	90	B-13	90
A-33	*	B-14	100
A-34	90	B-15	90
A-35	70	B-16	100
A-36	70	B-17	70
A-37	70	B-18	70
A-38	70	B-19	*
A-39	70	B-20	70
A-40	70	B-21	80
A-41	70	B-22	70
A-42	70	B-23	70
A-43	100	B-24	*
A-44	100	B-25	90
A-45	90	B-26	90
A-46	100	B-27	70
A-47	100	B-28	90
A-48	80	B-29	70
A-49	100	B-30	80
A-50	*	B-31	90
A-51	90	B-32	100
A-52	100	B-33	70
A-53	90	B-34	70
A-54	70	B-35	70
A-55	100	B-36	70
A-56	*	B-37	90
A-57	100	C-1	100
A-58	*	C-2	100
A-59	80	C-3	*
A-60	100	C-4	100
A-61	70	C-5	100
A-62	70	C-6	100
A-63	70	C-7	100
A-64	70	C-8	100
A-65	70	C-9	100
A-66	70	C-10	100
A-67	70	C-11	*
A-68	70	C-12	100
A-69	*		

Note: * - Indicates "Dummy" subarea used in original model, no release rate assigned.

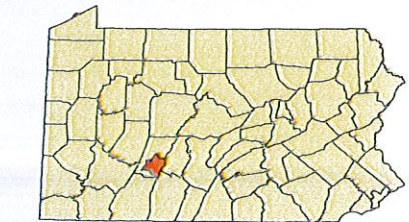


Release Rate Index Per Subarea

- 100% Release Rate
- 90% Release Rate
- 80% Release Rate
- 70% Release Rate



5000 0 5000 10000 Feet



Release Rate Map

Little Conemaugh River Watershed
Cambria/Blair/Bedford/Somerset Counties, PA

ACT 167 Stormwater Management Plan Phase I

Appendix D

Map Legend

- Watershed Boundary
- County Boundary
- Municipal Boundaries
- Railroads
- Streams
- Lakes
- PA. Traffic Routes
- State Route Ramps
- U.S. Traffic Route Ramps
- U.S. Traffic Routes
- Township Roads
- Other Roads

Prepared for:
Cambria County Conservation District
401 Candlelight Drive
Suite 221
Ebensburg, PA 15931
(814) 472-2120

Notes:
Portions of these maps were generated from existing data sources as listed below. This existing data was utilized for base mapping purposes and is shown on the maps for spatial reference only. This data did not enter into any computations or affect the reliability of the hydrologic analysis. Borton-Lawson Engineering has found some inaccuracies in some of this data and has corrected the data in locations where these discrepancies were obvious; however, it was not a part of this Act 167 Plan to correct all the base data.
Data Sources:
Municipal Boundaries - PennDOT
Roads, Streams - PennDOT
Management District - Borton-Lawson Engineering

Borton Lawson ENGINEERING

Corporate Office:
613 Baltimore Drive, Suite 300
Wilkes-Barre, PA 18702-7903
Telephone: (570) 821-1999 Fax: (570) 821-1990
World Wide Web: <http://www.borton-lawson.com>

Greater Lehigh Valley Office:
6614 Christoph Drive, Suite 200
Beth, PA 18014-8503
Telephone: (610) 837-5916 Fax: (610) 837-5918

Prepared By: CGF Checked By: WSB
Project Number: 2001-1049-00 Date: March 2003